

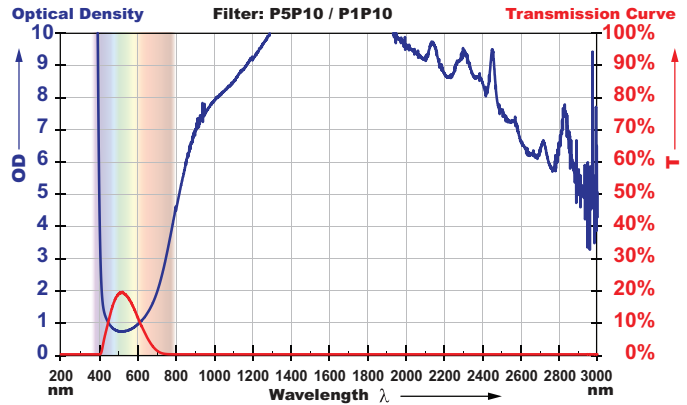
Filter: P1P10

Color: Blue
Material: Polycarbonate
VLT: 16%



Optical Density (OD):

- 180-315 D LB10+IR LB4+M LB6
- >315-385 D LB6+IRM LB8
- >385-400 DIRM LB4
- 635-<720 DIRM LB1
- 720-<770 DIRM LB2
- 770-<800 DIRM LB3
- 800-<840 DIRM LB4
- 840-<880 DIRM LB5
- 880-<960 DIRM LB6
- 960-<1030 D LB6+IRM LB7
- 1030-1400 D LB6+IRM LB8
- >1400-3600 DIM LB4+R LB3Y
- >3600-5250 DIM LB3+R LB3Y
- >5250-14000 DI LB4+R LB3Y+M LB5Y
- 635-690 0,01W 2x10E-6J RB1
- LVU F CE

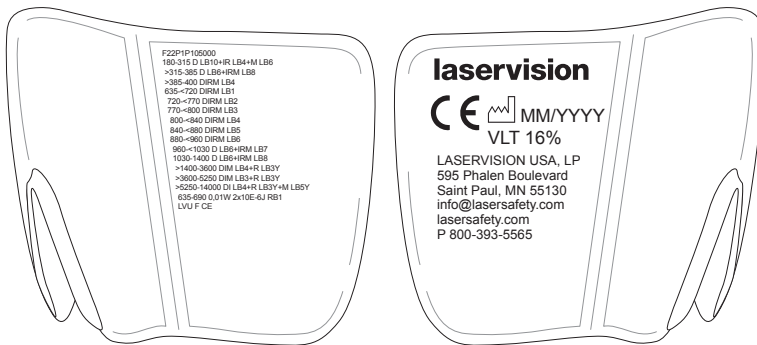


Visual interpretation of data. Please refer to the OD specifications for the actual protection level.

F22.P1P10.5000





Markings *Illustration, may vary slightly from final product.*



Labels

180-315 D LB10+IR LB4+M LB6
 >315-385 D LB6+IRM LB8
 >385-400 DIRM LB4
 635-<720 DIRM LB1
 720-<770 DIRM LB2
 770-<800 DIRM LB3
 800-<840 DIRM LB4
 840-<880 DIRM LB5
 880-<960 DIRM LB6
 960-<1030 D LB6+IRM LB7
 1030-1400 D LB6+IRM LB8
 >1400-3600 DIM LB4+R LB3Y
 >3600-5250 DIM LB3+R LB3Y
 >5250-14000 DI LB4+R LB3Y+M LB5Y
 635-690 0,01W 2x10E-6J RB1
 LVU F CE

F22.P1P10.5000

 CE  MM/YYYY
 VLT 16%

Manufactured by:
 LASERVISION USA, LP
 595 Phalen Boulevard
 Saint Paul, MN 55130
 info@lasersafety.com | lasersafety.com
 P 800-393-5565

Contact: Tom Poole
 t.poole@lasersafety.com
 Phone: 651-357-1801

Authorized Customer Signature

Date

Authorized Laservision Signature

Date